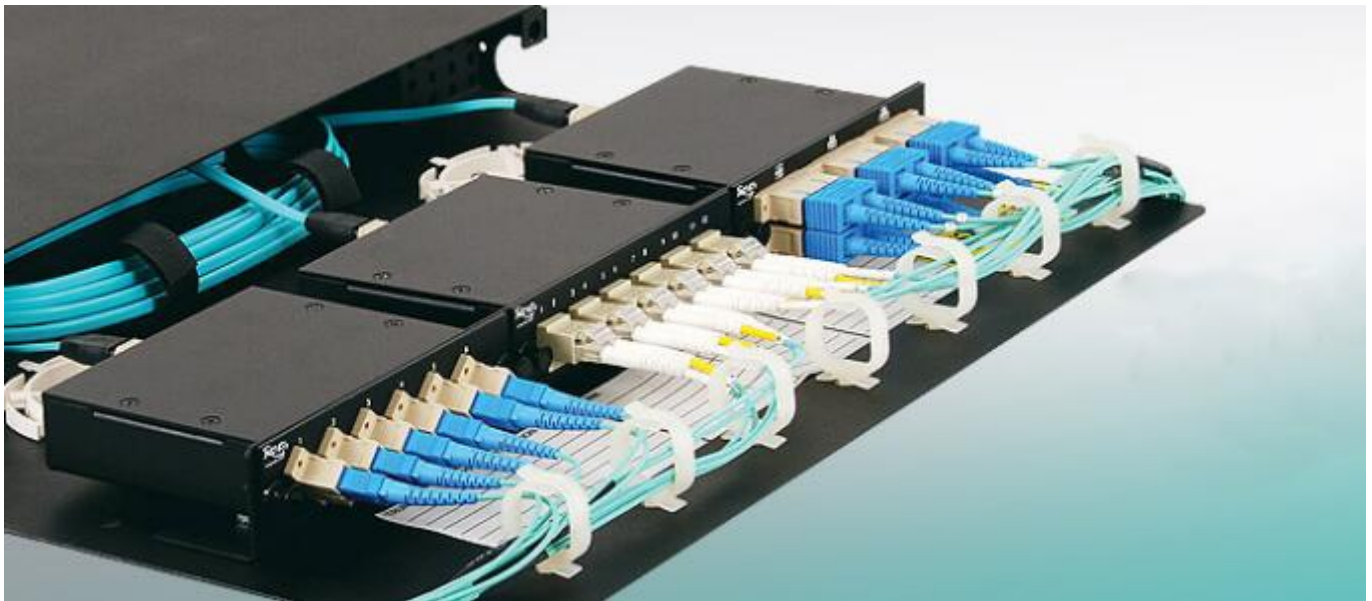


Optical MTP Panel

Description:

The High Density optical MTP patch panels are designed to accommodate high density applications in Data Centers and Telecommunication environments. With pre-populated and tested MTP patch panel saves on-site installation time and increase reliability. The design of enclosure allows for easy connection to the LC adapters using multi-fiber optical patch cords (sold separately) and is mountable in a standard 19in or 23in rack or cabinet frame.



Features:

Optical MTP Panel with 19" standard size , easy install;

Install with sliding rail, easy for take out;

Light weight, strong strength, good anti-shocking and dust-proof;

Well cable management, cable can be distinguished easily;

Roomy space ensure fiber bent ratio;

All types pigtail available for installation;

Application of Optical MTP Panel:

Data communication applications;

Data Center infrastructure;

Storage Area Network - Fiber Channel;

Emerging 40 and 100Gbps protocols compatible;

Optical MTP Panel Specification:

Part Number	APP01	Fiber Count	48
Front Connector	LC UPC DX adapter (24pcs)	Fiber Type	SM and MM optional
Channel Insertion Loss	≤ 0.2dB (LC)	Return Loss	SM≥ 55dB (LC) MM≥ 35dB (LC)
Cassette Material	Metal (SPCC)	Color	Black
Cassette Type	1RU 19"	Dimensions (H*W*D)	1U*250*482mm

Trade Information:

Item Name: Optical MTP Panel;

Brand: OPTICO;

MOQ: 100 pcs;

Lead Time: 7~15 days after deposit;

Price Terms: FOB Shenzhen;

Payment Terms: by T/T 30% deposit, 70% balance;

Packing: 1pcs/inner box, suitable quantity per carton;

Certificates:

The Optical MTP Panel has accorded with CE, ROHS, CPR, ISO certification standards;



Company Pictures:

